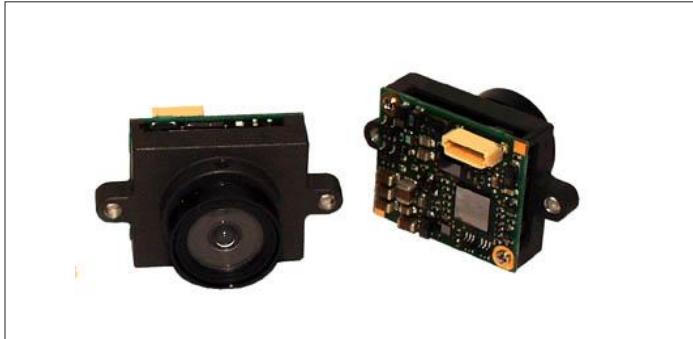
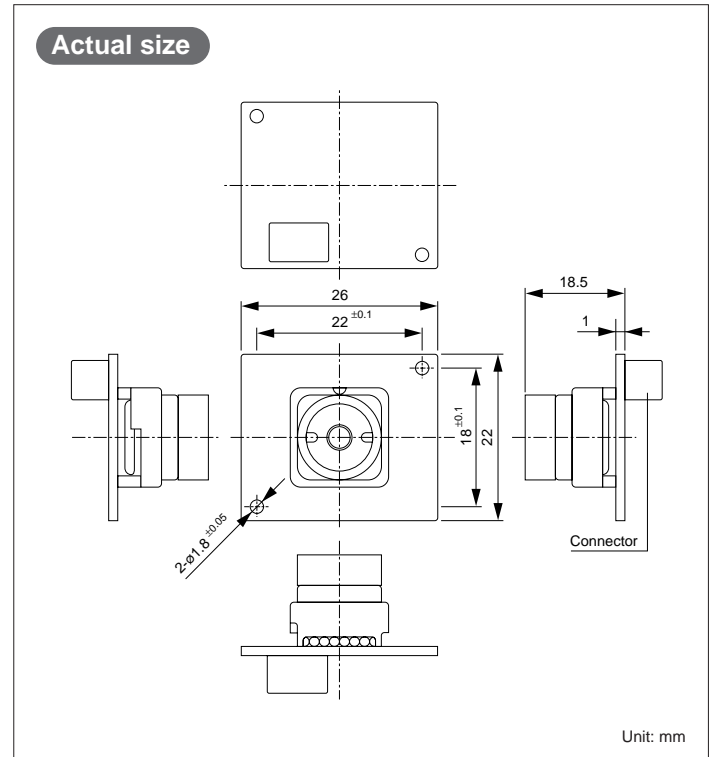


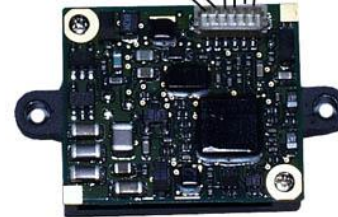
## Specifications

<b>Model No.</b>	CX161-BW
<b>Imaging area</b>	3.61 mm (H) x 2.72 mm (V)
<b>Imaging system</b>	Interline field accumulation
<b>Horizontal scanning frequency</b>	15.734 kHz
<b>Vertical scanning frequency</b>	59.94 kHz
<b>Number of scanned lines</b>	525 lines
<b>Frames per second</b>	30 frames
<b>Synchronization</b>	Internal synchronization
<b>Video output</b>	1 V(p-p) / 75 Ω composite
<b>Video Type</b>	RS-170 (Monochrome NTSC)
<b>Resolution</b>	Horizontal: Typ. 380 lines (center area)
<b>S/N ratio</b>	46 dB
<b>Minimum Illumination</b>	5 lux (at F2.0)
<b>AGC</b>	On (preset)
<b>ELC</b>	On (preset)
<b>White balance</b>	ATW (preset)
<b>External terminals</b>	6-pin cable connector (1) Power input (2) GND (3) Video output (4) GND (Optional) (5) I <sup>2</sup> C SCL (Not Used) (6) I <sup>2</sup> C SDA (Not Used)
<b>Power supply range</b>	DC 4.8 ~ 5.2 V
<b>Power consumption</b>	DC 5.0 V 160 mA (Typ.)
<b>Temperature range</b>	Operating (Actual use): -10°C ~ +50°C (PCB only) Guaranteed performance: +5°C ~ +35°C
<b>Humidity range</b>	Operating: 90% max. Storage: 95% max.
<b>Dimensions</b>	26 mm (W) x 22 mm (H) x 13.3 mm (D) (excluding connector)
<b>Weight</b>	Approx. 11 g

## Appearance



- (3) VID OUT  
(2) GND  
(1) 4.8-5.2 VDC  
(4) GND (optional)  
(5) Not Used  
(6) Not Used



- Weights and dimensions are approximate.
- Specifications are subject to change without notice.

DISTRIBUTED BY:



Available from [www.dpcav.com](http://www.dpcav.com)  
Part Number #CX161-BW

**Panasonic**

Panasonic is the brandname of Matsushita Electric.  
Printed in Japan  
[N-624]